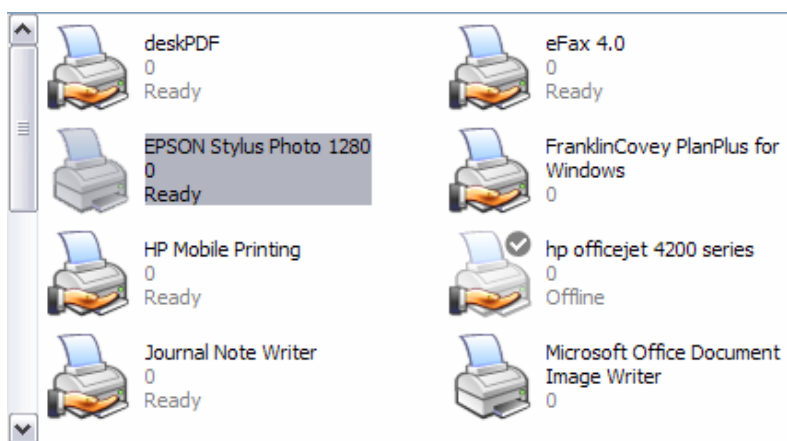
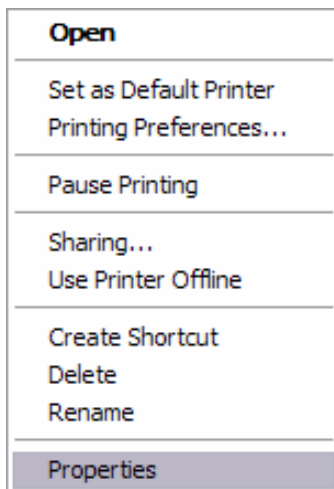


Epson 1280 Printer Setting for InkStar Film

1 - From start menu, select printers and faxes.

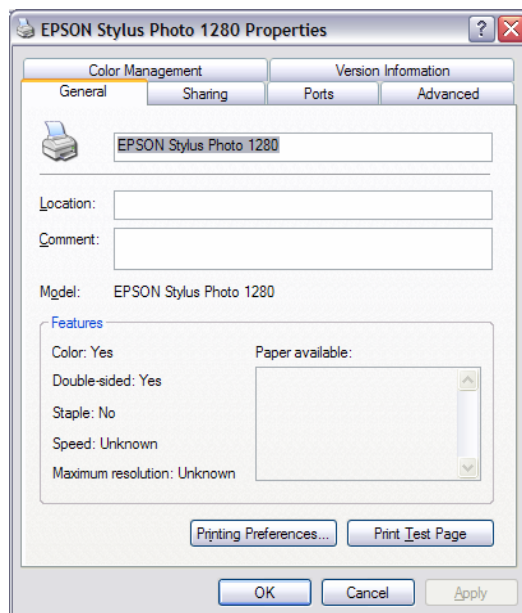


2 - Select the Epson 1280 printer, and right click. At this time there will be a drop down dialogue box. Select "Properties".

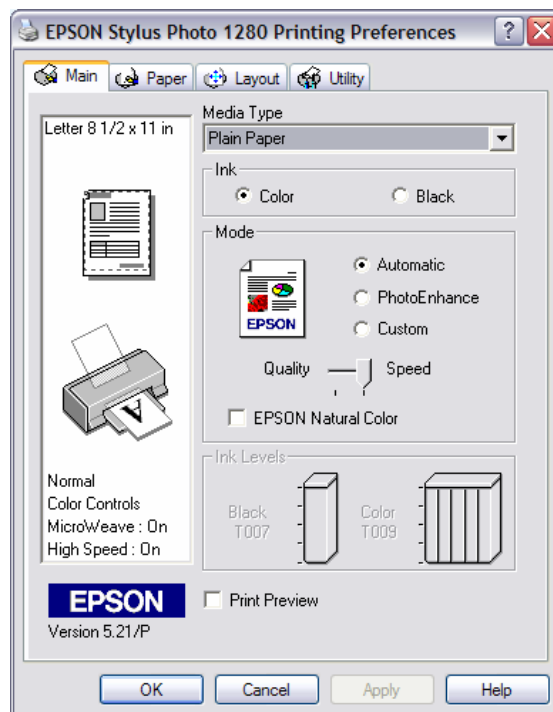


Epson 1280 Printer Setting for InkStar Film

3 - From the Properties dialogue box, select "Printing Preferences".



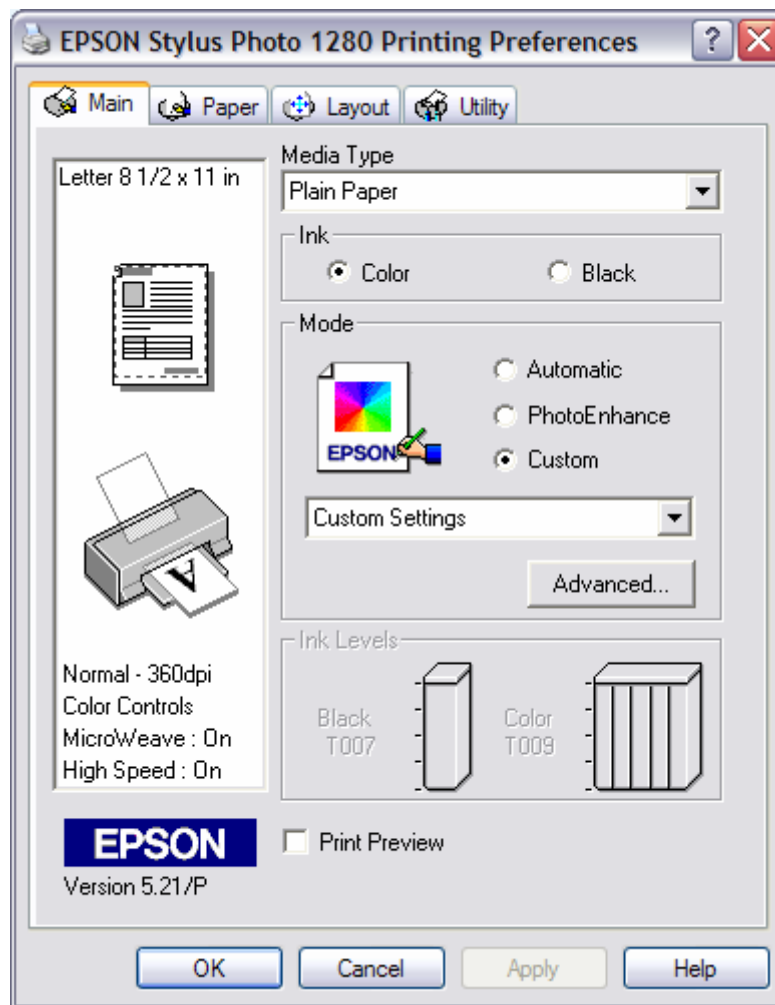
4 - From the Printing Preferences dialogue box, you will see generic settings.



Epson 1280 Printer Setting for InkStar Film

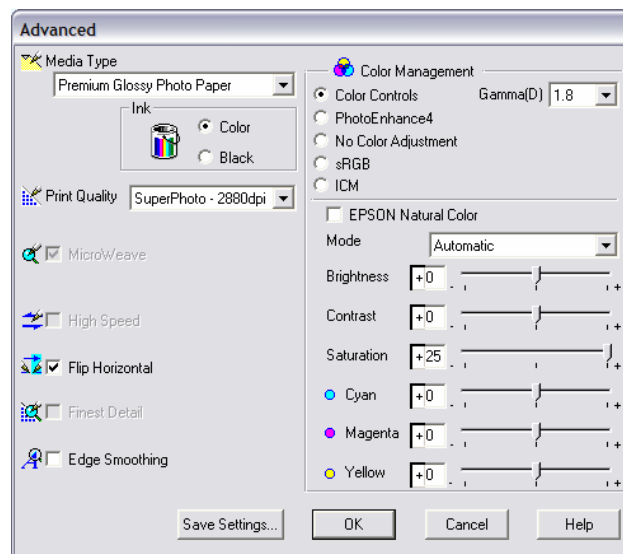
Epson 1280 Printer Setting for InkStar Film

- 5 – From the preferences dialogue box, select “Custom Setting” from the drop down menu located in the “Mode” area. After this step has been completed, click the “Advanced” button.

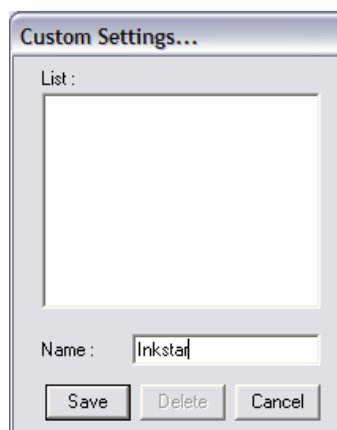


Epson 1280 Printer Setting for InkStar Film

- 6 - 1) From the Advanced dialogue box, select “Premium Glossy Photo Paper” from the drop down menu located in the Media Type section.
- 2) In the Color Management section, choose “Color Control” and Gamma is set to 1.8
- 3) Change saturation to +25
- 4) Select “SuperPhoto – 2880dpi from the print Quality drop down menu.
- 5) Select Flip Horizontal.
- 6) De-Select Edge Smoothing if checked.
- 7) Click “Save Settings”



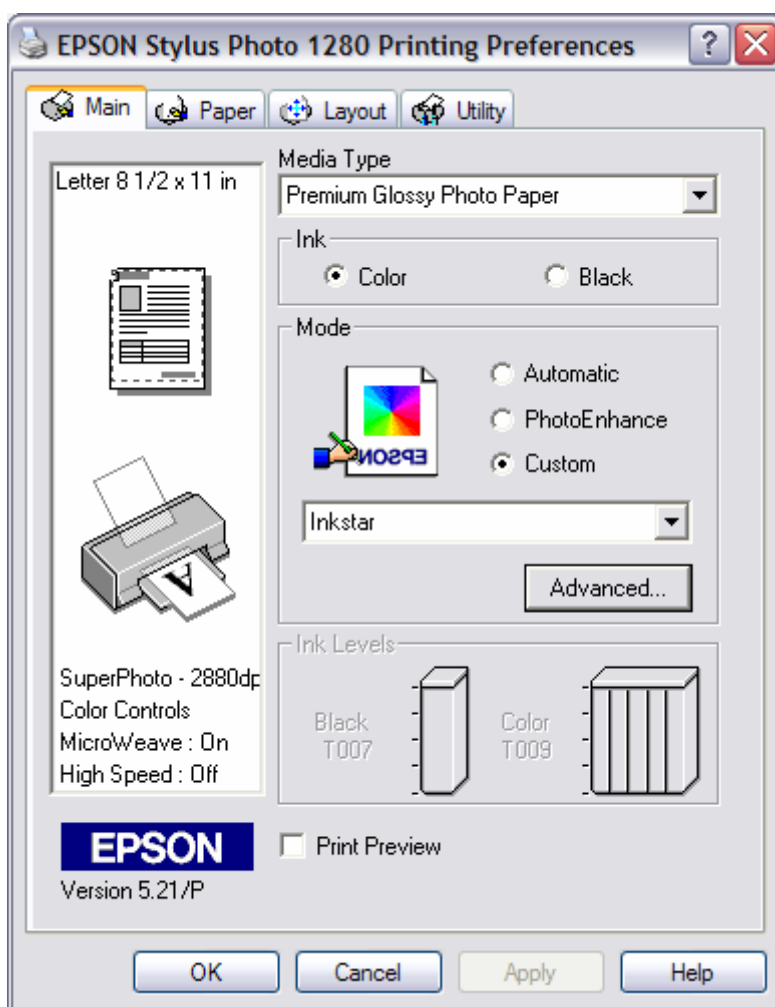
- 7 – Name your settings “InkStar” as these settings have been customized to provide ultimate performance using Nova Polymers InkStar film.



Epson 1280 Printer Setting for InkStar Film

Epson 1280 Printer Setting for InkStar Film

8 - Once settings have been saved, you will be returned to the preferences dialogue box where it should look like the screen capture below.



9 - Remember to ensure that your film is loaded properly with the emulsion side up. The emulsion side of the film has a dull or matte finish.

10 - If you have any question after following the steps, please call 1-888-484-NOVA (6682)

Epson 1280 Printer Setting for InkStar Film