

# Nova Polymers



*A new kind of sign material for a new kind of design*



## Thank you for your interest in Nova Polymers.

At Nova Polymers, we are committed to customer service, product development/support and the continual development of progressive product solutions. Our goal is to provide the most creative and diverse range of photopolymer materials to the architectural design and sign fabrication industries.

It is through these commitments, as well as our relationship with the architectural sign community that insures we are fully capable of exceeding all of your design expectations. Nova continues to be at the forefront of ADA legislation by representing the ISA and SEGD on the International Code Council, and is proud to be the industry leader as the focus continues to increase on green building initiatives and sustainable design materials in environmental graphic design. Whether it is innovative materials and equipment, workflow management software or consulting services that can make your process more efficient and profitable; we are there to help.

Thank you for your time. If there are any questions, please feel free to contact us directly.

### CONNECT WITH US



[novapolymers.blogspot.com](http://novapolymers.blogspot.com)



[facebook.com/NovaPolymers](https://facebook.com/NovaPolymers)



[twitter.com/novapolymers](https://twitter.com/novapolymers)



[linkedin.com/company/nova-polymers-inc.](https://linkedin.com/company/nova-polymers-inc.)



[flickr.com/photos/48544176@N07/](https://flickr.com/photos/48544176@N07/)



[youtube.com/NovaPolymers](https://youtube.com/NovaPolymers)



be innovative



be creative



be responsible



## DISCOVER THE POSSIBILITIES

### MATERIALS

NovAcryl® PT™	5
NovAcryl® ECR™	7
NovAcryl® LP™	9
NovAcryl® EX™	11
NovAcryl® YA™	13
NovAcryl® Permaglow™	14

### EQUIPMENT

Orbital X Photopolymer Processor	15
Workflow Manager Software	17
InkStar Inkjet Film Solution	
- Epson printers	19
AccuCutter finishing Shears	21
Kobo Hot Stamp Device	22

### ANCILLARY ITEMS

Adhesives - 3M adhesives	23
Other adhesives - Tesa, Mac Tac	25
Adheso-Cut Tape dispenser	26
Epson printing ink supplies (and printers)	27
Roland VersaUV LEC Series UV Inkjet Printer/Cutters	28

### RESOURCES

NovAcryl Preferred Fabricators	29
How To Specify NovAcryl	30
Environmental Summary	31
ADA Codes	33
Continuing Education	35



MATERIALS



EQUIPMENT



ANCILLARY ITEMS



RESOURCES

# NovAcryl® - PT Series™

## - NOW with Recycled Content



NovAcryl® PT™ series photopolymer is the greenest and most versatile line of signage photopolymers ever introduced. Features include a unique, clear PETG sign base that contain a minimum of 40% post-industrial recycled content which is resilient and shatterproof. NovAcryl® PT™ contains a .032 photopolymer layer that is moisture resistant. This interior-grade nylon material has a 80 Shore D hardness rating (durometer) and an ultraviolet (UV) inhibitor that blocks unwanted light contamination to extend sign life.

With a clear recycled base and 8 different gauges, your fabricating options are unlimited. Surface paint, subsurface paint or use digital graphics with NovAcryl® PT™ series.

NovAcryl® PT™ series can be sheer cut in thicknesses up to 1/8" thick, reducing fabricating times by 33%. PETG waste (such as small, off cuts) can be sent to a recycling facility after the photopolymer has been removed. The photopolymer effluent is 100% biodegradable and can be disposed of into any public sewer system - the perfect sign solution for environmentally conscious customers and LEED Certified facilities.

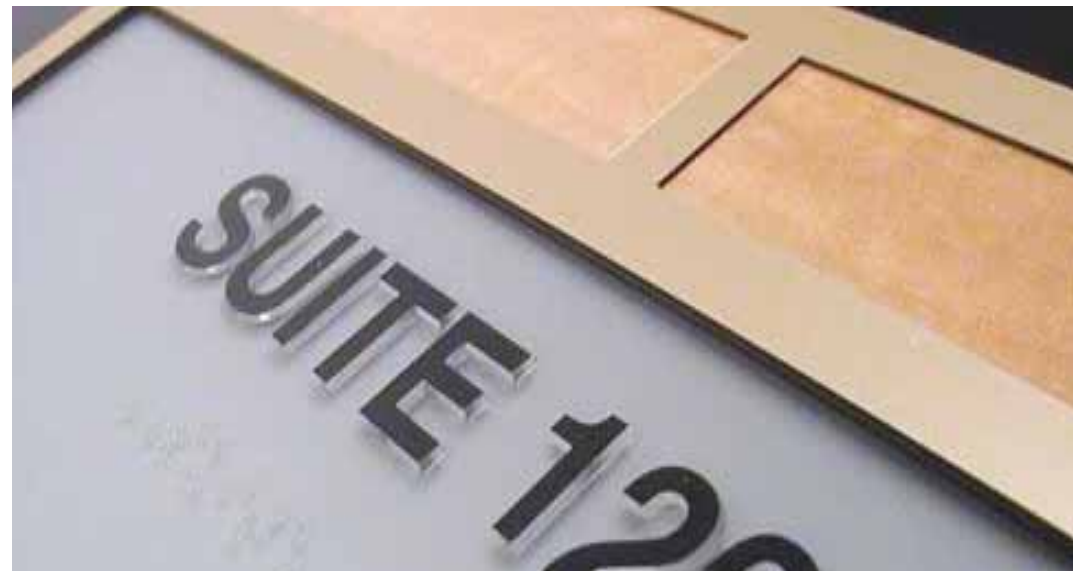
All gauges are available in 19x25 sheets with PT-118 and PT-236 also available in a 30"x40" sheet sizes. All NovAcryl sheets come with a high-tack back liner to prevent scratching.

*The clear, green solution for unlimited creative versatility.*

NovAcryl® PT™ series



Catalog #		Description	Size	Case/Lot
PT-020-NGC	.020" layer	Non-glare clear PETG sign base / .032" photopolymer	19" x 25"	10 Sheets
PT-040-NGC	.040" layer	Non-glare clear PETG sign base / .032" photopolymer	19" x 25"	10 Sheets
PT-060-NGC	.060" layer	Non-glare clear PETG sign base / .032" photopolymer	19" x 25"	10 Sheets
PT-080-NGC	.080" layer	Non-glare clear PETG sign base / .032" photopolymer	19" x 25"	10 Sheets
PT-118-NGC	.118" layer	Non-glare clear PETG sign base / .032" photopolymer	19" x 25"	5 Sheets
PT-118-NGC	.118" layer	Non-glare clear PETG sign base / .032" photopolymer	30" x 40"	3 Sheets
PT-190-NGC	.190" layer	Clear PETG sign base / .032" photopolymer	19" x 25"	5 sheets
PT-236-NGC	.236" layer	Clear PETG sign base / .032" photopolymer	19" x 25"	5 sheets
PT-236-NGC	.236" layer	Clear PETG sign base / .032" photopolymer	30" x 40"	3 Sheets
PT-375-NGC	.375" layer	Bonded PETG sign base / .032" photopolymer (made to order)	19" x 25"	3 sheets

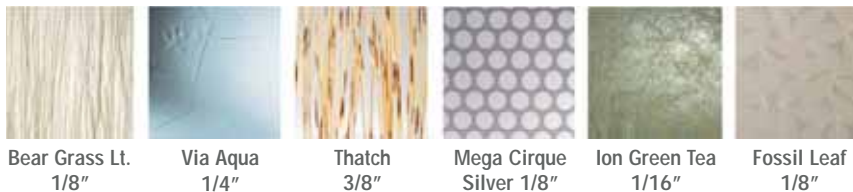


## NovAcryl® ECR™ series



NovAcryl® ECR™, offered exclusively by Nova Polymers, addresses the need for more creative sign solutions by the architectural design and sign fabrication industry. Nova Polymers has partnered with 3form®, recognized worldwide for innovative materials offered to architects and designers, to develop one of the most imaginative product lines ever introduced to the Architectural Signage industry. This new series of sign materials broadly expands the selection of colors, patterns, textures and finishes now available for ADA-compliant sign fabrication.

Nova Polymers bonds its clear photopolymer to 3-form's Varia™ series material to create sign solutions as diverse as your imagination. Sign designers can now custom select the color, pattern, texture, interlayer and finish of the sign material. Swatches on the right are just a sampling of the NovAcryl® ECR™ series. Visit our web site for the complete selection.



Bear Grass Lt.  
1/8"

Via Aqua  
1/4"

Thatch  
3/8"

Mega Cirque  
Silver 1/8"

Ion Green Tea  
1/16"

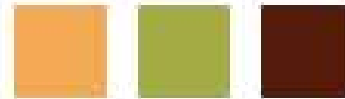
Fossil Leaf  
1/8"

Patterns shown below are carried in inventory and ready to ship upon receipt of your order.

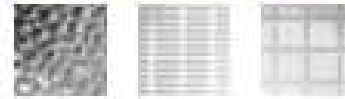
# Challenging sign designer's imaginations



color



geo



graphic



industria



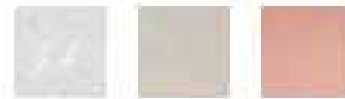
jazz



kami



moderna



signature



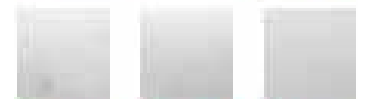
textura



new



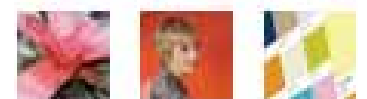
finishes



gauges



digital



## NovAcryl® LP™ series



NovAcryl® LP™, offered exclusively by Nova Polymers, is all about choice for the architectural design and sign fabrication industry. This series broadly expands the selection of materials now available for ADA-compliant sign fabrication.

Nova Polymers bonds its clear photopolymer to the comprehensive offering of laminates made by leaders in the industry, including Pionite®, Wilsonart® and Formica®. Sign designers can choose from a broad array of wood grains, marbles and granites, plus hundreds of colors and patterns to complement any decor. Swatches on the right are a very small sampling of the NovAcryl® LP™ series. Visit our web site for the complete selection.

Simply choose the pattern you like, then send us the manufacturer's product code and we will ship your selected material bonded with our photopolymer. All you need to do is expose and process the material using NovAcryl's recommended guidelines.

Patterns shown below are carried in inventory and ready to ship upon receipt of your order.

*More choices... marbles and granites, wood grains, plus hundreds of colors and patterns.*



Pionite #HP331  
Sunset



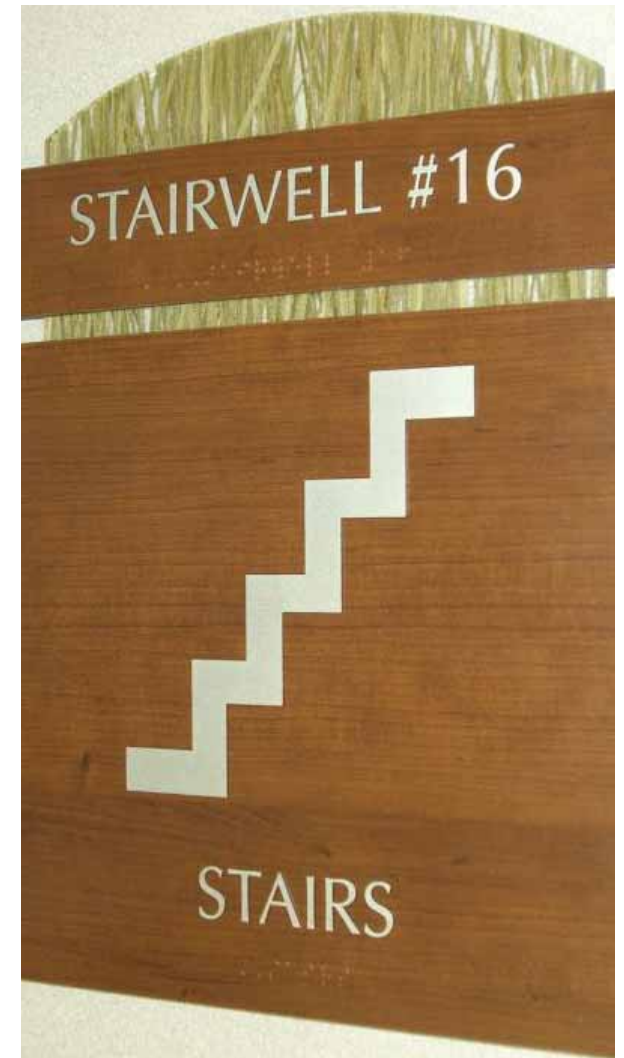
Formica #7012-58  
Amber Maple



Wilsonart #41300497  
Nordic Fusion



Pionite #5JM031  
Stellar



# NovAcryl® EX™ series



NovAcryl® Ex™ photopolymer is the industry's first pure, exterior-grade photopolymer resin. Its unique synthetic rubber monomers are exterior rated immediately after initial exposure to UV light. NovAcryl® Ex™ resin has a 0% swell rate in moisture-saturated environments, preventing collapse - even if the finish coat is less than perfect. NovAcryl® Ex™ is compatible with all exterior paints and requires no extended treatments.

## CHARACTERISTICS

Base thickness: .015" aluminum allow. Photopolymer layer: .032" extruded photosensitive synthetic rubber compound (Two-year shelf life). Note: New information is available to minimize handling and the laminating process. Please call for "Advanced Processing Data Sheet" when requesting unprocessed test samples.

*Exterior Photopolymer on Aluminum*



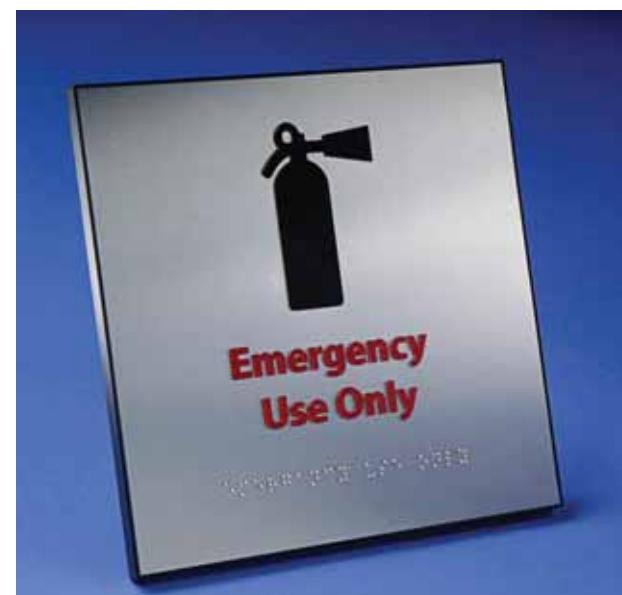
# NovAcryl® YA125™ series

## *Interior Aluminum Photopolymer*

YA125 consists of the same moisture-resistant, nylon-based photopolymer layer as found on NovAcryl®. The clear adhesive layer allows for a brushed aluminum face appearance. May be installed in unregulated interior environments. Its wide photo-latitude provides greater graphic detail. A new clear adhesive allows the natural aluminum appearance to show through.

### **SPECIFICATIONS**

.017" aluminum base / clear adhesive layer  
.032" clear nylon based photopolymer layer  
19" x 25" sheet size. 10 sheets per case.



# NovAcryl® Permaglow 150™ series

*Photo-luminescent material for architectural and safety sign applications*



NovAcryl® Permaglow 150™, offered exclusively by Nova Polymers, is the ideal solution for safety and egress signage concerns, as well as environmental concerns about energy savings and CO2 emissions.

NovAcryl® Permaglow 150™ absorbs ambient light during the day and provides photo-luminescent emergency guidance at night. At night time, or in the event of a power outage, the photo-luminescent material instantly emits light

without any electrical power. NovAcryl® Permaglow 150™ ensures orderly egress to and inside stairwells and exits, clearly identifies fire extinguishers and emergency aids, and illuminates fire escape and evacuation routes.

Permaglow 150™ features a patented clear photopolymer bonded to a photo-luminescent material. The marriage of these materials creates a broad selection of multi-purpose architectural and safety sign applications for day and night usage.

Create raised graphics, text and/or numerals, and braille signage in thousands of shapes and sizes with NovAcryl® Permaglow 150™. Custom graphics can be color finished to match new specifications or existing building standards.

Permaglow 150™ is intended for interior applications only and offered in .047" thickness and a 19" x 23-1/2" sheet size. Environmentally friendly and user friendly, NovAcryl® Permaglow 150™ is processed in plain tap water. By replacing incandescent and LED exit signs with NovAcryl® Permaglow 150™, you reduce CO2 emissions and energy use.



Daytime



Nighttime

# Orbital X Photopolymer Processor

SEE THE VIDEO

<http://www.youtube.com/watch?v=5gjdimeokA4>



The Orbital X is an all-in-one system that processes water-washable photopolymer sign material. This stack-style processor features an orbital washout, an exposure section, a three-drawer dryer and a post exposure section. Any of these features can be customized to tailor the system for your specific operation.

Made in the USA, the Orbital X is simple to use and versatile. Components are easily accessed (including the light drawers) from the front of the unit. Safety features include “ground fault” protection, component fuses and a safety switch for UV lamps. The washout section is stainless steel to prevent corrosion.

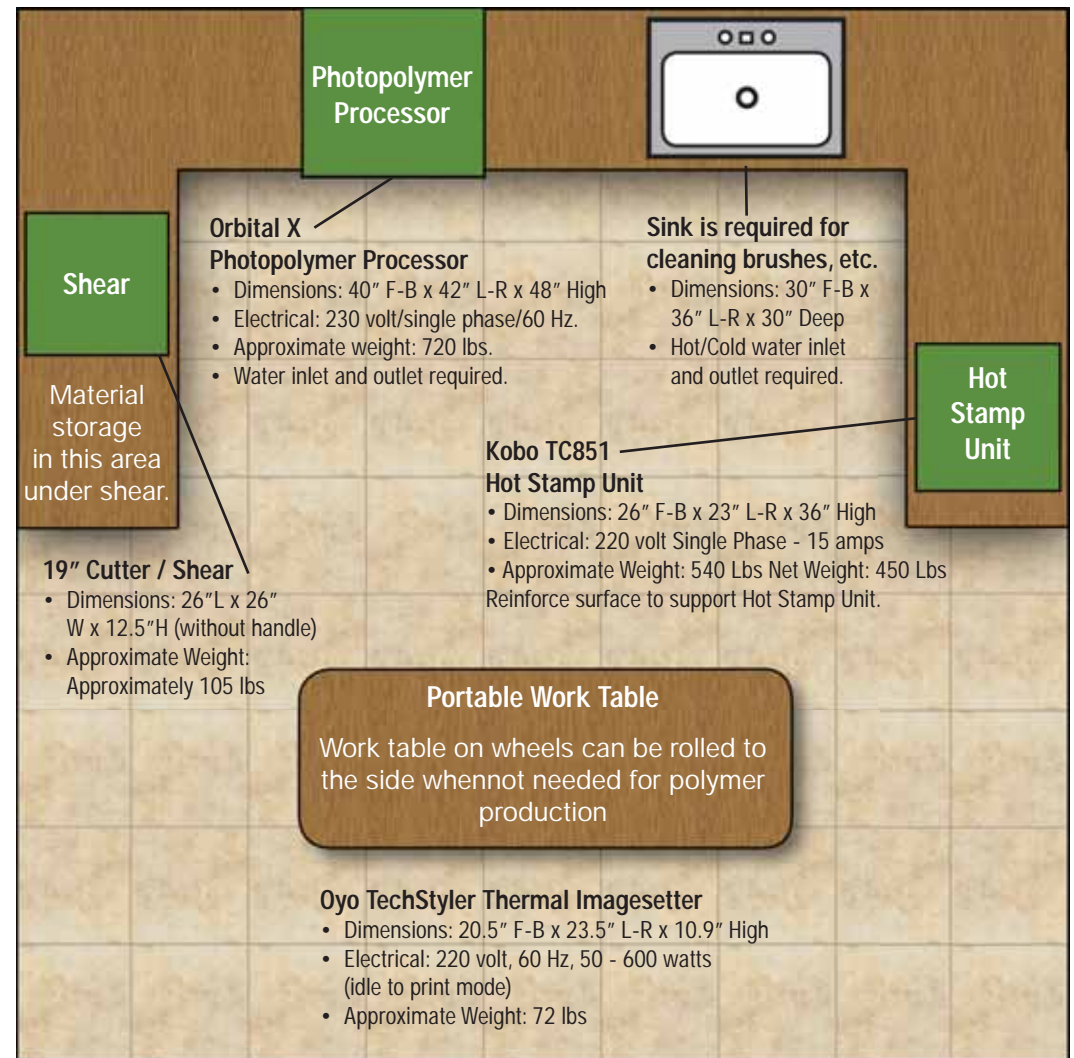
A dual orbital-action platen provides efficient and smooth washout and a digital timer assures accurate washout times. The brush height is adjustable to suit your sign gauge requirements. The exposure section is located in a drawer below the washout section and is equipped with a digital timer, vacuum pump and electronic solid-state ballasts. A thermostatically-controlled, 3-drawer dryer uses forced air to efficiently dry the sign material. Each drawer is mounted on its own drawer slides.

# In-House Production of ADA Compliant Photopolymer Signs

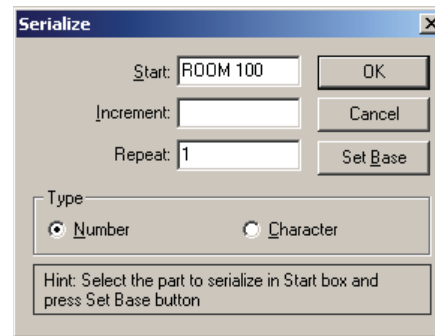
Photopolymer Manufacturing Room Layout  
18' x 18' Floor Plan - not to scale



Max. Sign Size 24"x 30" 220 volt/single phase/60hz.  
Size: 40" L x 42"W x 48"H Weight: Approx. 720 lbs.



# Workflow Manager



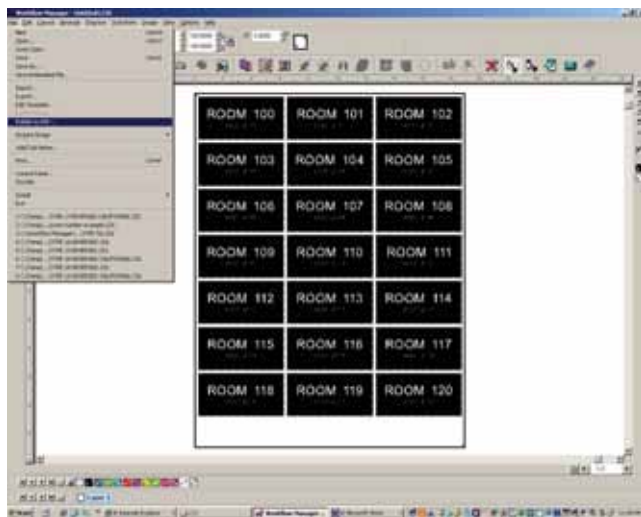
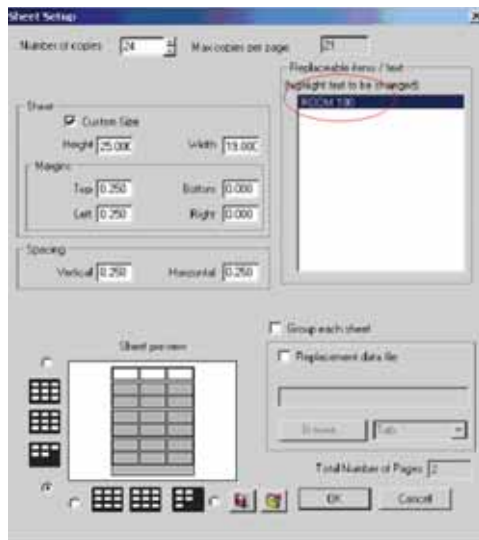
**WORKFLOW MANAGER™** is a new software package that streamlines photopolymer sign production to save time and money. Nova Polymers partnered with industry leader CADlink Technology to develop this workflow management solution that automates the file creation process for ADA-compliant signage.

WorkFlow Manager™ was developed specifically for sign fabricators that use photopolymer to create ADA-compliant signage. The use of photopolymer continues to grow as the selection of colors, patterns, textures and finishes continues to expand, along with the trend to find environmentally friendly sign material.

Workflow Manager™ allows the sign fabrication industry to re-think the entire process of making photopolymer signage as a result of streamlined production and increased profitability.

If you currently produce photopolymer signs in house, WorkFlow Manager™ will make your already profitable business even more so. In the time it takes to read this sales literature you can create 200 unique ADA compliant sign panels with WorkFlow Manager™. Just consider the benefits:

*Streamline production and increase efficiency.*



- ▶ Faster production
- ▶ Reduced errors
- ▶ Reduced labor costs
- ▶ Increased efficiencies
- ▶ Increased profit margin
- ▶ Create template for sign
- ▶ Set human readable and braille (G1, G2 and California)
- ▶ Layout to optimize film use
- ▶ Export to PDF and DXF

If you have not yet brought photopolymer sign-making in house, ask yourself why? The commercial building industry is at an all time high, and photopolymer signage is a profitable part of that unprecedented growth. Now with WorkFlow Manager™ profitability is even greater. Call us to see how WorkFlow Manager™ can benefit your operation.

# InkStar Inkjet Film Solution



**INKSTAR RIP** was designed specifically to meet the unique needs of sign and screen printers. Without question, it delivers the most efficient workflow, with features that sign fabricators and screen printers need - and nothing they don't require. It is the unneeded features of other programs that make them complicated and slow. InkStar RIP is extremely accurate and the fastest RIP in the industry. Called "release rate," InkStar RIP passes and releases data to a printer faster than any other RIP. In fact, most files RIP in 1 second or less!



**INKSTAR2 INK JET FILM** Designed to produce high-quality, high-density film negatives and positives, InkStar2 ink jet film is universally receptive to both dye and pigment ink. Durable and cost-effective, InkStar2 ink jet films are designed for maximum performance with InkStar Film Printers and are the ideal substrate for your printing requirements. InkStar2 ink jet film delivers...



**DYESTAR INK** is a dye-based ink specifically developed for the production of high-density film negatives and positives. DyeStar Ink provides a very broad range of media support. Hybrid Ink Jet Systems HD (high dmax) ink technology provides greater overall density for richer blacks, delivering the best results for sign and screen film halftone output.

## *High density film negatives and positives*



InkStar 17  
Film Printer



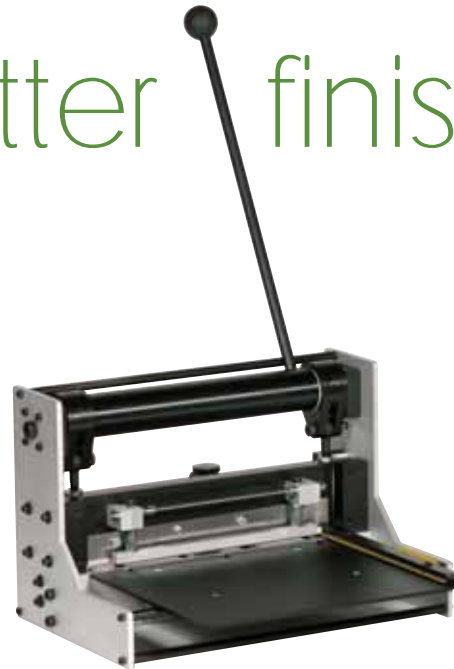
InkStar 24  
Film Printer

Introducing the InkStar family of Film Printers. Designed to meet the needs of the most demanding professionals, InkStar film printers incorporate a unique printer design with a breakthrough, new ink jet technology to produce the highest quality film negatives and positives.

### **Features include:**

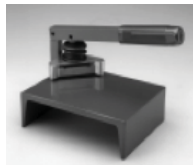
- ▶ Advanced black-and-white printing technology
- ▶ Automatic Print Head Alignment & Nozzle Check Technology
- ▶ Industry Defining 8-color Pigment-based Ink System
- ▶ Three-level Black Ink technology
- ▶ High-performance Print Engine Speeds
- ▶ Superior Connectivity
- ▶ Professional Media Handling
- ▶ World-Class Service and Support into imagery.

# AccuCutter finishing Shears



The 3001 Series of Guillotine Shears offers the extra precision and power of a larger commercial guillotine shear in a smaller, more affordable bench shear. Available in 13" or 19" sizes, the classic guillotine design has been modified to provide convenience and flexibility.

Many lighter-weight shears move during use and are difficult to use. The 3001 Series shears are constructed to industrial standards. Their size and mass deliver impressive, long-lasting performance. The 13" shear weighs 85 pounds, and the 19" shear weighs 105 pounds. Most of the weight is in the guillotine action that is made primarily of steel. The shear cuts aluminum and plastic with little effort, but the real strength and quality of the design are evident when cutting harder materials. A full width cut is flat and square and may be made by the most timid operator.



The 3001 Series was designed by accucutter® and is an accucutter® exclusive. These shears are made in the USA entirely of American materials.

# Kobo Hot Stamp Device

*Streamline production and increase efficiency.*



Create stunning graphics with KOBO TC-Series hot stamp machines. Instantly apply color and metallic effects to painted or unpainted raised ADA-compliant photopolymer graphics. No cleanup or chemistry is required.

These units feature heavy-duty cast construction for long-lasting performance. The coil heating element provides level temperature across entire heated area. A vulcanized 70 durometer silicone pad is attached to the heated area to provide level foil transfer to irregular surfaces affected by paint or overall thickness. Best of all, these machines are user friendly so even a novice can produce professional results.

# 3M Adhesives



**3M** *Innovation*

Nova Polymers is much more than the largest distributor of photopolymer sign products. We offer a comprehensive range of 3M adhesive solutions for thousands of applications, including...

**3M tapes****Abrasives** - Coated Abrasives, Scotch-Brite™ Surface Conditioning Products and Superabrasives and Microfinishing Abrasives

**Adhesives** - Aerosols, Contact, Epoxy, UV/light Cure, Structural, Sealants and Removers

**Converting** - Permanent Printed Labels, Laminating Adhesives, Die-cut Tape Applications and Identification Products

**Fastening** - Double Coated Tapes and Reclosable Fasteners

**Safety** - Personal protection and Environmental Protection

**Tapes** - Industrial Tape Products and Packaging Products

*Innovative Solutions, Reliable Mounting*



# Tesa, Mac Tac Adhesives



Nova also carries Tesa and Mactac adhesive solutions for unlimited mounting ability.

**tesa®** - has a variety of solutions for the sign and banner industry with an extensive line of fastening, masking and packaging tapes will be sure to meet your needs!

**MACTac** - these Double-sided tapes are used for mounting and bonding just about anything! Plastic, metal, rubber, ceramics and powder-coated products.

- ▶ Perfect for Sign Shops
- ▶ Frame Shops
- ▶ Architectural
- ▶ Home Repair
- ▶ Hobbies and Crafts
- ▶ POP Displays
- ▶ Comes in sheet form so you can cut it to the size and shape you need.

# Adheso-Cut Tape Dispenser

*Automated dispensing reduces labor*

Nova Polymers is much more than the largest distributor of photopolymer sign products. We offer a comprehensive range of 3M adhesive solutions for thousands of applications, and automated tape dispensers like the Adheso-CUT system.

This definite length automated tape dispenser allows the user to set specific lengths while in automatic mode or the length can be set manually. Adheso-CUT is equipped with a tape stand that holds 3" core adhesive tapes. The split tape mandrel can accommodate 1 roll of tape up to 2" wide or 2 rolls of tape up to 1" wide.

## Benefits include:

- ▶ Increased Productivity
- ▶ Present Clean & Straight Cuts
- ▶ Consistent Tape Lengths
- ▶ Eliminate Sticky Messes
- ▶ Reduced Operator Fatigue
- ▶ Reduced Waste



<http://www.novapolymers.com/products/equipment/adhesive-dispensers/>

# Epson Photo Stylus Printers and Supplies

**EPSON®**



Maximum paper width: 24" & 44"

**EPSON DIGITAL INK-JET PRINTERS** Choose from a complete line up of Epson Stylus Pro printers and proofers, backed by Nova Polymers. We also offer Epson's complete line of professional ink and media at extremely competitive prices.

**NEW EPSON STYLUS® PRO 7900/9900**

Representing Epson's next generation, the Epson Stylus Pro 7900 (24-inch) and Epson Stylus Pro 9900 (44-inch), incorporate their latest achievements in photographic ink jet technology. By combining the precision of their MicroPiezo TFP™ print head with the extraordinary performance of Epson UltraChrome® HDR ink, the newest generation of Epson Stylus Pro printers continues to represent a level of technology unprecedented in Epson's history.

Complete line of all Epson inks for all printers incling multiple size cartridges.

Complete line of Epson Paper and Media for all Professional and Wide Format Printing including roll and sheet substrates.

# Roland VersaUV LEC Series UV Inkjet Printer/Cutters



<http://www.novapolymers.com/products/equipment/rolland-versauv-printers>

As the world's first UV inkjet printer/cutters, Roland's DPI award-winning VersaUV LEC series quickly revolutionized the packaging prototype and short-run label industries. For the first time, professionals could print CMYK plus White and Clear inks for varnishing and embossing effects on virtually any substrate and then crease, contour cut or perf-cut their designs, all on one device through one seamless work flow.

VersaUV uses safe, low-heat LED lamps to print on materials ranging from metallic and synthetic papers and foils to BOPP, PE and PET film, even leather and fabrics. VersaUV creates remarkably rich effects including matte and high-gloss finishes in your choice of textures and patterns. Roland ECO-UV inks produce graphics that are easy to handle and can be stretched across curved surfaces and sharp edges without cracking. With VersaUV, your prototypes and comps are so realistic, they are virtually indistinguishable from finished products.

# Our Preferred Fabricators



Our Preferred Fabricators listed below, have participated in a process audit to ensure that:

- ▶ The facility adheres to material processing guidelines as specified by Nova Polymers, Inc.
- ▶ Photopolymer processing equipment is maintained and in good working condition.
- ▶ Is proficient in the use of the Novacryl brand of materials.
- ▶ Has implemented good manufacturing processes that help to reduce errors and cycle time.
- ▶ Understand the design/build process, so that they can work as a partner to ensure a quality end product that meets or exceeds your expectations.
- ▶ Braille and Tactile components respect current state and federal guidelines.

For a complete list of Our Preferred Fabricators.

Please visit <http://www.novapolymers.com/architectural/preferred-fabricators>

# How To Specify NovAcryl®



Specifying NovAcryl® Photopolymers is as easy as the material is reliable. Nova offers a downloadable 3-part CSI specification on the Nova website along with complete downloading capabilities on Arcat. Nova also has a complete series of BIM objects for ADA Braille and Wayfinding Signage.

You can download and create a 3-part spec using Spec Wizard from [ARCAT.com](http://www.arcat.com) or download in .wpd, .doc, .rtf and ascii format by following the link below.

- ▶ <http://www.novapolymers.com/architectural/specifications>

Building Information Modeling (BIM) objects for Architectural and Wayfinding Signage. The first BIM Object for ADA of their kind. To use our BIM object go to:

- ▶ <http://www.arcat.com/bim/novapoly/novapoly.shtml?coid=43994>

The screenshot shows the website for Nova Polymers, Inc. The header includes the ARCAT logo and the company name. The main content area features a search bar, navigation tabs (BIM Objects, CAD Details, Building Products, Signs, SpecWizard®, Featured Products, User Login), and a list of products. A table titled "Interior Photopolymers" lists various products with their trade names, descriptions, and contact information.

Products	Trade Name	Description	Contact
Interior Photopolymers	NovoClear™	Novo has partnered with 3M® to develop one of the most creative solutions ever introduced to the Architectural Signage Industry. This solution blends Novo's clear photopolymer layer (found in the industry leading Novocryl®) to 3M's Vantac™ Series base material. The result is a clear, durable, and easy-to-install solution, which has led to 45% recycled content, complements Novo's already diverse line of green solutions.	
Interior Photopolymers	NovoClear™	As the name implies, the process of Vantac™ resin panels are as diverse as your imagination. By allowing you to custom select the color, pattern, texture, size, shape and form of your material, Novo's Vantac™ series photopolymer solution transforms into the perfect medium for your architectural applications.	
Interior Photopolymers	NovoClear™	The industry leading photopolymer sign material. The photopolymer layer of Novocryl® is a medium-resistant, interior grade sign material with a Durability hardness rating of 85 Shore D. The clear PETG base of all Novocryl® sheets provides a guaranteed UV inhibitor to block unwanted light performance. All Novocryl® sheets come with a high-tech back layer to prevent bubbling.	
Interior Photopolymers	NovoClear™	The introduction of NovoClear™ can change the way you design your next tactile project. From raised graphics to markings and graphics, LP patterns. Visit us today.	
Interior Photopolymers	NovoClear™	We now have Novo's popular high-resolution clear photopolymer to over a hundred advanced performance artwork substrates from rugged sports line Forming, Platte and Whimsical. All patterns are available in 1/8" thickness and a sheet size of 24" x 24".	
Interior Photopolymers	NovoClear™	TRULIS consists of the same medium-resistant hybrid based photopolymer layer as found in Novocryl®. Clear artwork layer allows for a printed	

# Environmental Statement



At Nova Polymers we are committed to environmental responsibility and the manufacturing of products that have a low impact on our planet. This commitment extends throughout our manufacturing process and supply chain. We stress the importance of building strategic relationships with companies and organizations that provide solutions that complement our initiative of reducing our environmental footprint.

Recycled content, indoor air quality, waste reduction and efficient processes are among the attributes that we look for in the products and services we offer. Our goal is to provide our customers with solutions that best meet the demands of their clients while striving for environmental responsibility.

**EDUCATION** - We believe that education related to environmental consciousness is a fundamental key to reducing the impact we have on our planet. Working with organizations like the United States Green Building Council (USGBC) and the Society for Environmental Graphic Design (SEGD) allows us to bring awareness of the environmental issues that are faced in our industry every day. We have worked with the SEG D to co-develop a Green Paper which lays out practices and principles that are directly related to Environmental Graphic Design. These methodologies are aimed at reducing the impact we have on our environment.

*The world is a naturally beautiful place..... We prefer to keep it that way.™*

**MANUFACTURING EFFICIENCIES** - Our manufacturing facility is located in Bryan, OH. Our goal is to incorporate locally sourced material and work with companies that share our vision of environmental responsibility. We recently added two new products that incorporate Greenguard™ Certified materials. One of these products incorporates a minimum of 40% recycled content.

In our manufacturing process we have implemented just-in-time manufacturing techniques to reduce energy and waste while becoming more efficient. These strategies are carried over to our clients who use our solutions in their fabrication processes. In 2008 we developed OEM software and processing techniques that allow our customers to significantly reduce waste and realize efficiency gains in their process.



**ENERGY AND WASTE REDUCTION** - There is a great deal of energy and material waste that is created in the sale-of-goods process that can generally go unnoticed. While we feel it is important to look internally at operations, we feel it is equally as important to look at the way our products are brought to market.

In 2007 we redesigned our packaging and implemented a new sales and distribution program. We have also begun developing a Material Reclamation Program which will provide a resource to dispose of materials at the end of their useful life in an environmentally responsible manner.

The current environmental movement across our respective industries is primarily driven by commercial building. The strides that have been made in commercial building are quantifiable and reach into all sectors of business. While these strides have been a catalyst for early adoption of environmental policies, they are not the only reason for personally taking steps to ensure that our companies are being responsible; the reason is simply because we know that our resources are not unlimited and that we have a responsibility to do the right thing for ourselves and future generations.

# ADA Codes

Whether you are designing, fabricating or installing signage, it is important to ensure that compliance with ADA regulations is maintained. Below is part of chapter 7 of the 2004 ADAAG detailing ADA sign requirements.

## Americans with Disabilities Act and Architectural Barriers Act Accessibility Guidelines

### 703 Signs

**703.1 General:** Signs shall comply with 703. Where both visual and tactile characters are required, either one sign with both visual and tactile characters, or two separate signs, one with visual, and one with tactile characters, shall be provided.

**703.2 Raised Characters.** Raised characters shall comply with 703.2 and shall be duplicated in braille complying with 703.3. Raised characters shall be installed in accordance with 703.4.

**703.2.1 Depth.** Raised characters shall be 1/32 inch (0.8 mm) minimum above their background.

**703.2.2 Case.** Characters shall be uppercase.

**703.2.3 Style.** Characters shall be sans serif. Characters shall not be italic, oblique, script, highly decorative, or of other unusual forms.

**703.2.4 Character Proportions.** Characters shall be selected from fonts where the width of the uppercase letter "O" is 55 percent minimum and 110 percent maximum of the height of the uppercase letter "I".

**703.2.5 Character Height.** Character height measured vertically from the baseline of the character shall be 5/8 inch (16 mm) minimum and 2 inches (51 mm) maximum based on the height of the uppercase letter "I".

**703.2.6 Stroke Thickness.** Stroke thickness of the uppercase letter "I" shall be 15 percent maximum of the height of the character.

**703.2.7 Character Spacing.** Character spacing shall be measured between the two closest points

of adjacent raised characters within a message, excluding word spaces. Where characters have rectangular cross sections, spacing between individual raised characters shall be 1/8 inch (3.2 mm) minimum and 4 times the raised character stroke width maximum. Where characters have other cross sections, spacing between individual raised characters shall be 1/16 inch (1.6 mm) minimum and 4 times the raised character stroke width maximum at the base of the cross sections, and 1/8 inch (3.2 mm) minimum and 4 times the raised character stroke width maximum at the top of the cross sections. Characters shall be separated from raised borders and decorative elements 3/8 inch (9.5 mm) minimum.

**703.2.8 Line Spacing.** Spacing between the baselines of separate lines of raised characters within a message shall be 135 percent minimum and 170 percent maximum of the raised character height.

**703.3 Braille.** Braille shall be contracted (Grade 2) and shall comply with 703.3 and 703.4.

**703.3.1 Dimensions and Capitalization.** Braille dots shall have a domed or rounded shape and shall comply with Table 703.3.1. The indication of an uppercase letter or letters shall only be used before the first word of sentences, proper nouns and names, individual letters of the alphabet, initials, and acronyms.

Table 703.3.1 Braille Dimensions

Measurement Range	Minimum in Inches Maximum in Inches
Dot base diameter	0.059 (1.5 mm) to 0.063 (1.6 mm)
Distance between two dots in the same cell <sup>1</sup>	0.090 (2.3 mm) to 0.100 (2.5 mm)
Distance between corresponding dots in adjacent cells <sup>1</sup>	0.241 (6.1 mm) to 0.300 (7.6 mm)
Dot height	0.025 (0.6 mm) to 0.037 (0.9 mm)
Distance between corresponding dots from one cell directly below <sup>1</sup>	0.395 (10 mm) to 0.400 (10.2 mm)

1. Measured center to center.

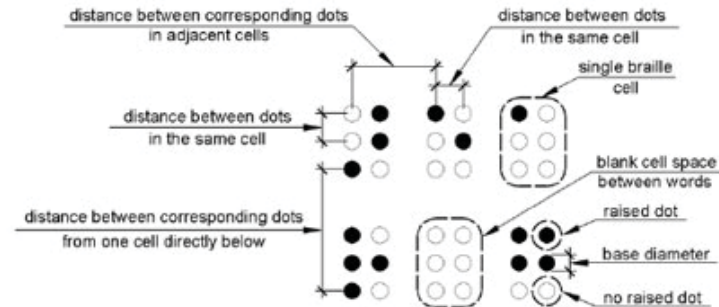


Figure 703.3.1 Braille Measurement

# Continuing Education



Nova Polymers has been an AIA approved Continuing Education Provider since 2009. We became a provider because we believe that providing educational content to the Architectural & Design community is critical to ensuring that the built environment provides accessibility to those with disabilities and done in a sustainable and environmentally conscious manner. This is why we have developed courses in the categories of Health, Safety and Welfare (HSW) and Sustainable Design (SD). These areas of continuing education are topics that Nova is very familiar with, as it relates to the core attributes of our products.

The Novacryl brand of Architectural Way-Finding signage materials is the industry standard for ADA compliant sign materials and systems - this is why we created the HSW credit course; ADA Requirements For Room Identification Signs.

If you are an Architectural / Design Firm and would like us to present this course to your team, please contact **Dave Miller** [dmiller@novapolymers.com](mailto:dmiller@novapolymers.com) and we will work with your CES Coordinator to schedule a Lunch & Learn Presentation at your firm.

If you are a Sign Fabricator and want to learn more about ADA compliance, please contact **Mike Santos** [mike@novapolymers.com](mailto:mike@novapolymers.com)



# Continuing Education Equals Accessible Design

## Wayfinding and Accessible Signage



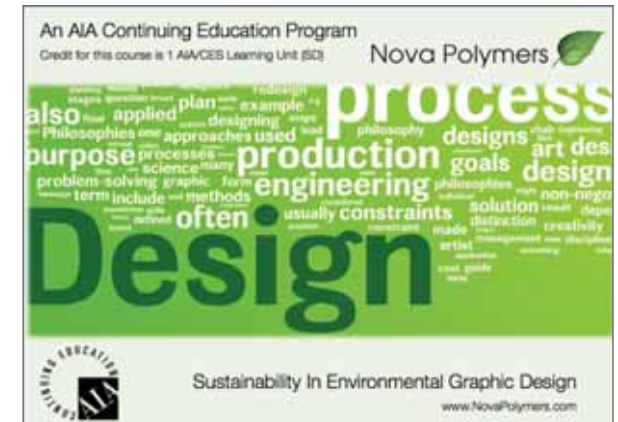
- ▶ What is Wayfinding
- ▶ Understanding Wayfinding in our everyday lives
- ▶ Symbols and Universal Design
- ▶ ADA Accessible Signage
- ▶ ADA Codes
- ▶ Best Practices of Wayfinding
- ▶ Case Studies

## 08RMID ADA Requirements for Room Identification Signs



- ▶ What Is ADA?
- ▶ Regulations Relating To ADA Compliance
- ▶ States and the ADA including Title 24
- ▶ Understand General Terminology
- ▶ Signage Design Restrictions
- ▶ What Areas Require ADA Compliant Signage?
- ▶ How To Make A Photopolymer Sign.
- ▶ Understanding Photopolymer And Its Applications

## Sustainability in Environmental Graphic Design



- ▶ What is Sustainable Design
- ▶ Understanding LEED Rating System
- ▶ Considerations for Environmental Graphic Design (EGD)
- ▶ Strategies for EGD
- ▶ Case Study

# Nova Polymers



## CONNECT WITH US



[novapolymers.blogspot.com](http://novapolymers.blogspot.com)



[facebook.com/NovaPolymers](https://facebook.com/NovaPolymers)



[twitter.com/novapolymers](https://twitter.com/novapolymers)



[linkedin.com/company/nova-polymers-inc.](https://linkedin.com/company/nova-polymers-inc.)



[flickr.com/photos/48544176@N07/](https://flickr.com/photos/48544176@N07/)



[youtube.com/NovaPolymers](https://youtube.com/NovaPolymers)